



## Monthly Reporting Link

It is important that you report your numbers to us monthly. These numbers keep us USDA compliant as well as help us to secure grants! Reports should be submitted using the link found on our website's Agency Zone or

**CLICK HERE!**

**Only 92 out of 215 Agencies reported for January 2024**

## When Do You Distribute?

The "Find Food" page on our website is the #1 resource used by the community to find distributions! This information is only updated every 2 years unless you notify us of a change.

## Find Food Page

Found an error? Email Kelly at [agencyservices@fbfna.org](mailto:agencyservices@fbfna.org)



## REPORTING? BUT WHY??

*Do you ever wonder what we do with those demographic reports you submit each month?*

It may seem like an extra step on top of all the good work you are already doing, but there really is a great reason!

For example, when your County Commissioner comes to us and asks how the county is doing in the fight against hunger, we rely on those numbers to give them an accurate snapshot!

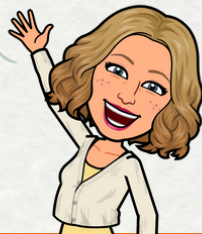
We also use those numbers to secure grants and provide feedback to both the USDA and Feeding America showing compliance.

*We know how much food we are distributing to you, but YOU provide us with the number of clients we are serving!*

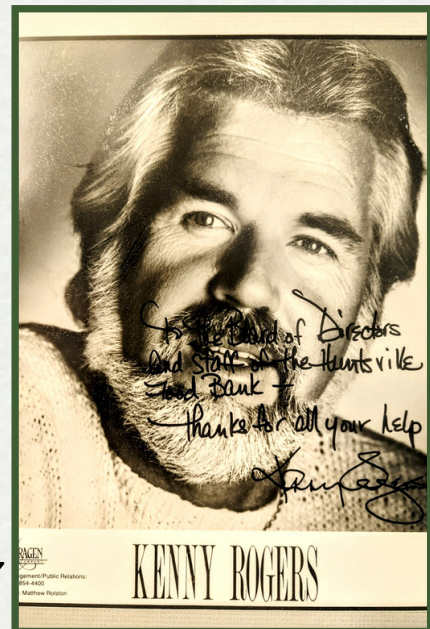


## AGENCIES HELPING AGENCIES

- **VOLUNTEERS** - If you have any volunteers that would like to help other pantries as well, let us know!
- **A Cargo Van**
- **Some sort of outdoor storage facility** (anyone upgrade a shed recently and have a spare?)



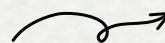
Please Contact Amanda at [communityrelations@fbfna.org](mailto:communityrelations@fbfna.org) to coordinate if you have any that you are ready to part with!



## 40 YEAR FACTS:

The First 30,000 lbs of food was collected at a Kenny Rogers Concert!

Check out our autographed Kenny Rogers headshot in our front lobby!



AGENCY NEWSLETTER  
Community/Public Relations  
954-8400  
Matthew Robinson

**KENNY ROGERS**

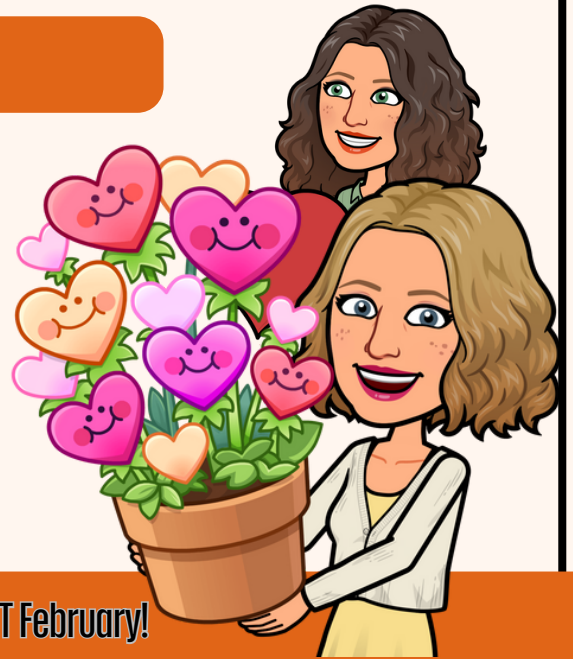
# AGENCY NEWSLETTER

## Thanks A Bunch!

We had a fantastic time during our site visits this month!

We feel fortunate to have incredible agency partners and appreciate all your dedication and effort.

Please don't hesitate to contact us if you require any assistance! You don't have to wait for our scheduled visit. We'd be delighted to visit and witness your distribution process in action or assist in resolving any issues you may encounter!



Thank you for a GREAT February!

## Agency Services Spotlight

The Development Department has introduced a new series highlighting the impacts that our partnered agencies have throughout North Alabama. Check us out on Facebook and Instagram!



**The Harbour**  
 172 COMMISSIONER DRIVE  
 MERIDIANVILLE, AL 35759  
*Every Tuesday*  
 4:30-6:30  
*#Friends of the Food Bank*

## The Spotlight Series

This platform enables us to showcase our incredible community partners and their contributions to addressing food insecurity. It also serves as an avenue to raise awareness about needs and obstacles that our donors and the public might not know about. For example, volunteer roles (drivers/volunteers capable of lifting heavy loads) or necessary equipment such as trucks, freezers, or sheds for additional storage.

If you would like to be part of our Spotlight Series, email Abbey Rothfeldt at [arothfeldt@fbofna.org](mailto:arothfeldt@fbofna.org)

What is something The Harbour needs?

### CARGO VAN

The Harbour is currently relying on personal vehicles that are too small for their work. They are making multiple trips a month to fulfill the need of their patrons. A cargo van would allow fewer pickups and reliable transportation!